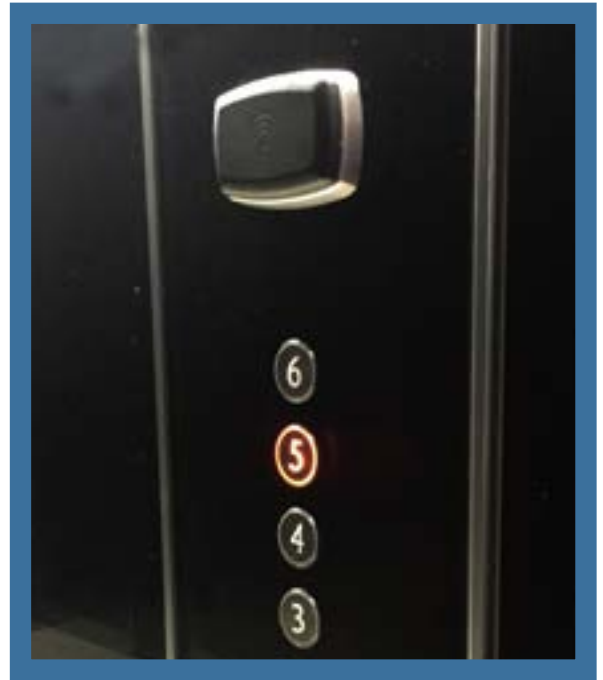


RFID Elevator Controller

Vingcard's RFID Elevator Controller is designed to fit into elevator panels and can be operated off- or online. The security level of the property will increase, as only guests with a valid keycard will have access to the elevators.



FEATURES

- : Supports Mobile Access ⁽¹⁾
- : Modern and minimalistic design – based on the same reader unit as Signature RFID locks.
- : Possible to limit access to floors according to each guest or staff keycard's privileges.
- : 8 relay outputs to selectively enable the elevator call buttons is delivered as standard.
- : Extendable with up to 15 extra relay modules, each with 8 relay outputs. This gives a maximum of 128 relay outputs.
- : Can also control different devices such as electronic strikes and motor locks as a remote controller.
- : Fully compatible with Vostio and Visionline system.
- : Ring around the reader can be delivered in all standard VingCard metal finishes.
- : UL-294 certified.
- : RFID Specifications:
 - 13,56MHz technology
 - Compatible with the following standards:
 - ISO 14443 A (MIFARE)
 - ISO 14443 B
 - ISO 15693

1) Mobile Access is available when using a reader that is BLE compatible.

vingcard
ASSA ABLOY

Experience a safer
and more open world

TECHNICAL DATA

Power requirements

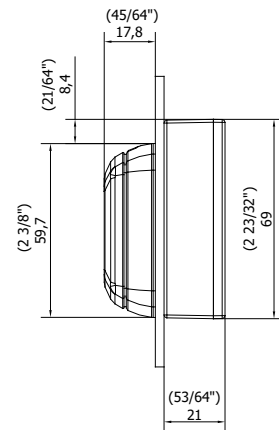
Maximum current consumption for the elevator reader	150 mA continuously.
Maximum current consumption for each relay module	Maximum current consumption for each relay module.
Maximum load of relay outputs	0,6A@125VAC or 2A@30VDC Resistive.
Each complete unit, supplied individually packed, consists of	RFID Reader with frame in any standard metal finish. 20 m cable. RS-485 Gateway used as relay module and online communication gateway.

Standards & Certifications

European Low Voltage Directive
European EMC Directive
European Radio Equipment Directive
Federal Communications Commission (FCC)
Industry Canada (IC)
UL-294

External power supply must be ordered in addition if needed.

Dimensions:



Configuration overview of Elevator Controller in an online:

